

La-Y (Lanthanum-Yttrium)

H. Okamoto

The La-Y phase diagram in [Massalski2] was redrawn from [1982Gsc]. However, it contained an impossible phase field (α La, α Y), which is a continuous single phase field extending from (α La) to (α Y) with different crystal structures.

This problem was solved in the La-Y phase diagram calculated by [2006Du] (Fig. 1). Phase boundaries involving the δ phase in Fig. 1 must be confirmed experimentally.

References

- 1982Gsc:** K.A. Gschneidner, Jr. and F.W. Calderwood, The La-Y (Lanthanum-Yttrium) System, *Bull. Alloy Phase Diagrams*, 1982, 3(1), p 94-96
- 2006Du:** Z. Du, C. Guo, C. Li, and W. Zhang, Thermodynamic Modeling of the La-Mg-Y and Mg-Based Alloys Database, *Rare Metals*, 2006, 25(5), p 492-500

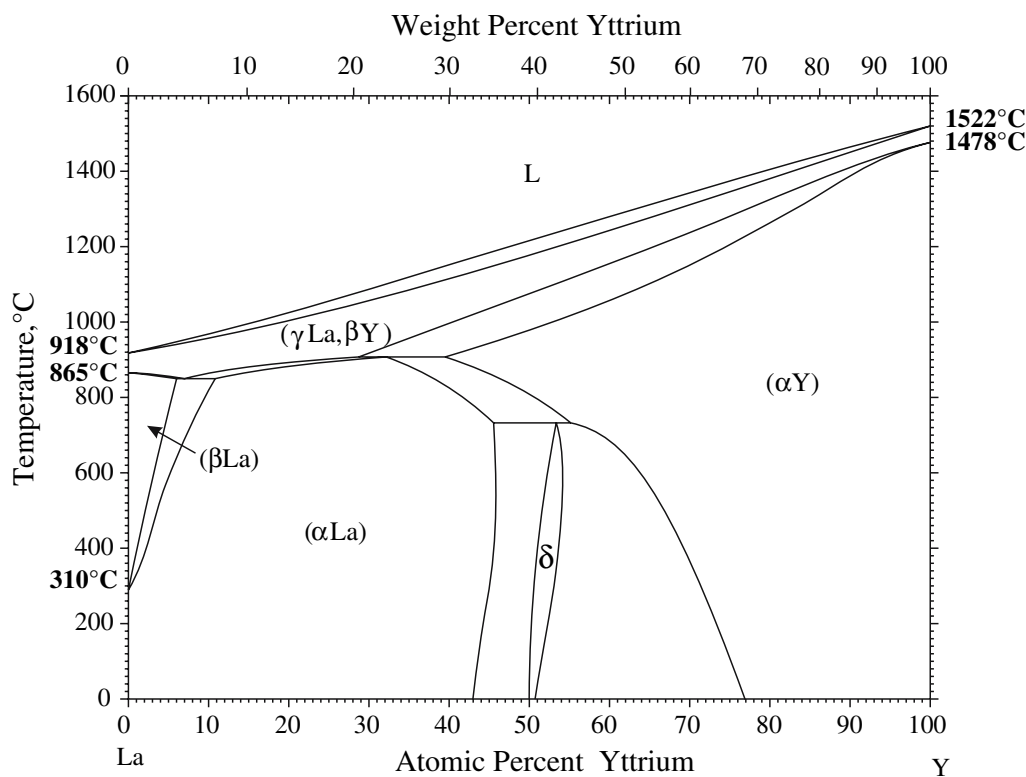


Fig. 1 La-Y phase diagram